



# China Greater Bay Area

(GBA)



# Content





---



1. [What is Greater Bay Area?](#)
2. [The high-speed ferry ports between HKIA](#)
3. [Getting to GBA](#)
4. [GBA within reach](#)
5. [Direct Air Pass \(Air Plus Ferry\)](#)
  - [Seamless journey](#)
  - [Product features](#)
6. [Direct flights to Guangzhou](#)
7. [High Speed Rail](#)
8. [SkyLimo/ Mainland & Macao Coaches](#)
9. [Intermodal experience walkthrough \(HKIA to GBA\)](#)

# What is the Greater Bay Area?



-  A dynamic world-class city cluster
-  A key component of the Belt and Road Initiative
-  An international centre for technology and innovation
-  A demonstration zone of comprehensive cooperation between the Chinese mainland, Hong Kong SAR, and Macao SAR



# The high-speed ferry ports with journey times between HKIA and port codes



## Hong Kong

An international financial, transportation and trade centre as well as global aviation hub. As a cosmopolitan city with diversified culture and world class attractions, Hong Kong often surprises visitors with its abundant countryside.

Ferry port: **SkyPier at HKIA**



## Shenzhen

A high-tech economic powerhouse across the border from Hong Kong, Shenzhen boasts green spaces, entertainment districts, and two convenient ferry ports.

Ferry port: **Shekou, Shenzhen (ZYK)**; 30 minutes from SkyPier  
Ferry port: **Shenzhen Airport, Fuyong (FYG)**; 50 minutes from SkyPier



## Guangzhou

With more than 2,000 years of history, the famed capital of Guangdong Province and its largest city continues to be a commercial hub and major port in the Pearl River Delta.

Ferry port: **Lianhuashan, Guangzhou (ZIY)**; 100 minutes from SkyPier



## Nansha (Guangzhou)

Facing the mouth of the Pearl River, Nansha and its signature Tin Hau Palace temple grounds is home to the port of Guangzhou and the Nansha Wetland Park.

Ferry port: **Nansha, Guangzhou (NSZ)**; 70 minutes from SkyPier

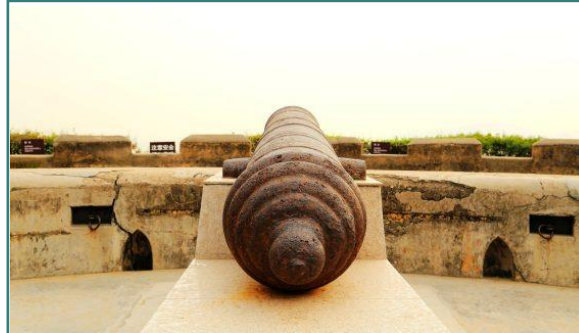
# The high-speed ferry ports with journey times between HKIA and port codes



## Macao

It might be nicknamed 'The Las Vegas of Asia' but Macau possesses a distinct character borne of its mixed Chinese and Portuguese heritage. This is evident in its diverse food and unique architecture.

Taipa Ferry port: **Macau / Taipa (YFT)**; 65 minutes from SkyPier



## Humen (Dongguan)

The Port of Humen – an important logistics gateway to the Greater Bay Area – serves industrious Dongguan, and is dotted by historic Qing dynasty forts like Weiyuan Fort.

Ferry port: **Humen, Dongguan (ZTI)**; 90 minutes from SkyPier



## Zhuhai

One of China's premier tourism destinations Zhuhai, often called the Chinese Riviera, borders Macao, and is famous for its scenic settings and high quality of life.

Ferry port: **Jiuzhou, Zhuhai (ZUI)**; 70 minutes from SkyPier



## Zhongshan

A leafy city of hot spring resorts and monuments, Zhongshan is a growing manufacturing and research centre, named after local-born Dr Sun Yat-sen.

Ferry port: **Zhongshan (ZGN)**; 70 minutes from SkyPier

# Getting there

---



AIR

Direct flights to Guangzhou from Hong Kong International Airport.



FERRY

Easy, seamless connections to seven ports in Guangdong via the airport's SkyPier.



HIGH SPEED RAIL

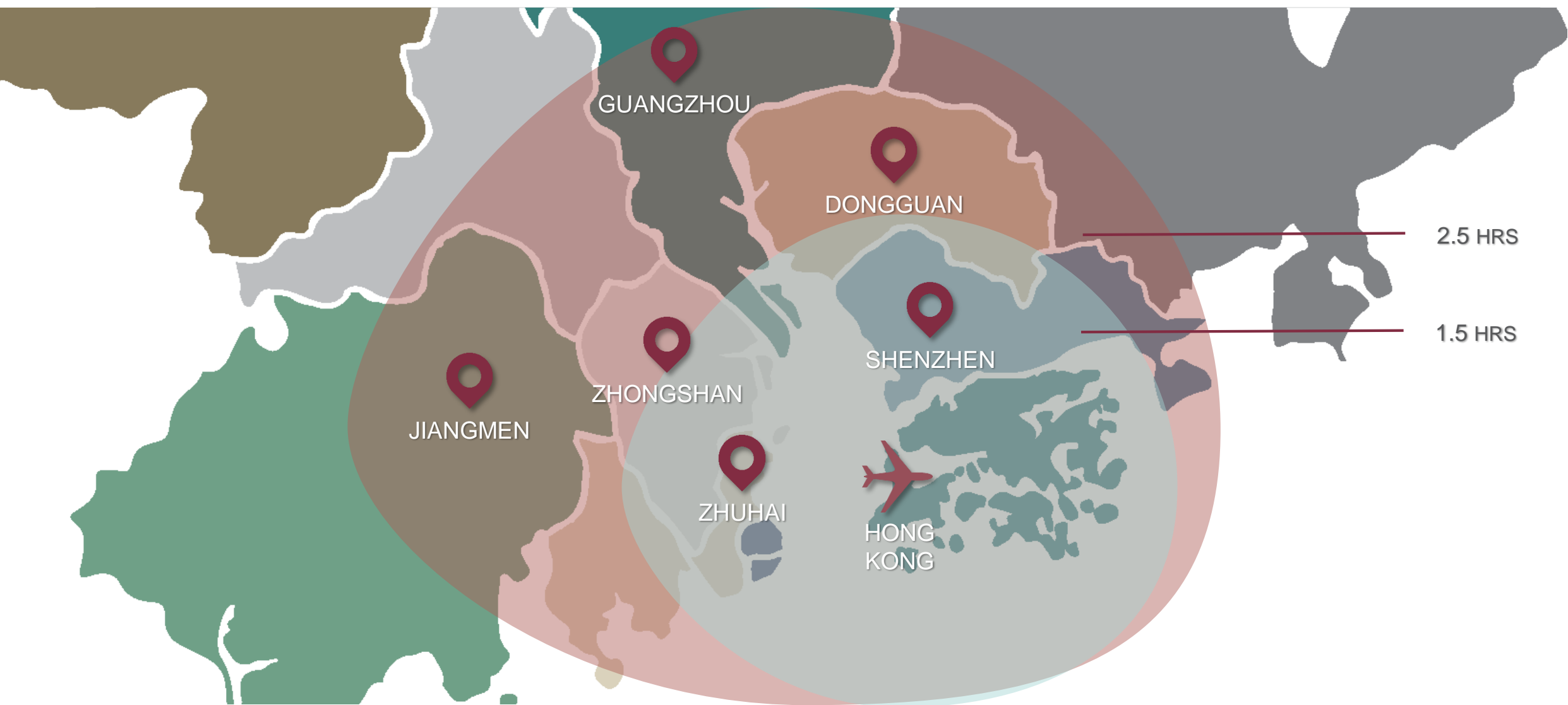
Direct line from West Kowloon station to 58 destinations in the Chinese Mainland.



SKYLIMO/COACHES

Inexpensive transit option to over 50 destinations in the Chinese Mainland, direct from the airport.

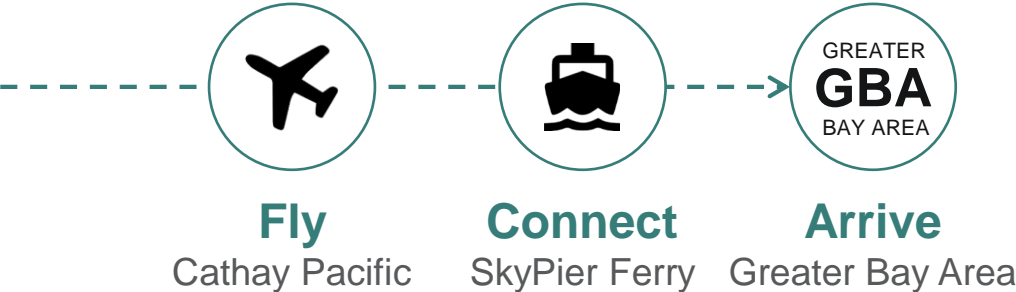
GBA within reach



# Connect to the Greater Bay Area with premium, high-speed ferry services



Passengers flying with Cathay Pacific can book their flight-and-ferry ticket together and enjoy seamless high-speed ferry transfers and baggage tag through service all the way to the seven destinations within the Greater Bay Area.



## High-speed departure to any of the seven ferry ports

Ferry Port	Port Code	Voyage Time
Shenzhen-Shekou	ZYK	30 minutes
Shenzhen-Fuyong	FYG	50 minutes
Guangzhou-Nansha	NSZ	70 minutes
Zhongshan	ZGN	70 minutes
Zhujai-Jiuzhou	ZUI	70 minutes
Dongguan-Humen	ZTI	90 minutes
Guangzhou-Lianhuashan	ZIY	100 minutes

# A seamless journey with Direct Air Pass (Air Plus Ferry)



## Traveling to the Chinese mainland



1 Arrive at HKIA with CX



2 Head to T1



3 Go to Counter E2 (ferry transit)



4 Collect ferry ticket

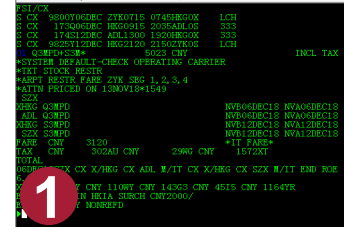


5 Go to Skypier via automated shuttle



6 Arrive at ferry port & collect luggage

## Returning from the Chinese mainland



1 Book ticket



2 Check-in at ferry port



3 Pass immigration



4 Board ferry to HKIA Skypier



5 After arrival, head to boarding gate

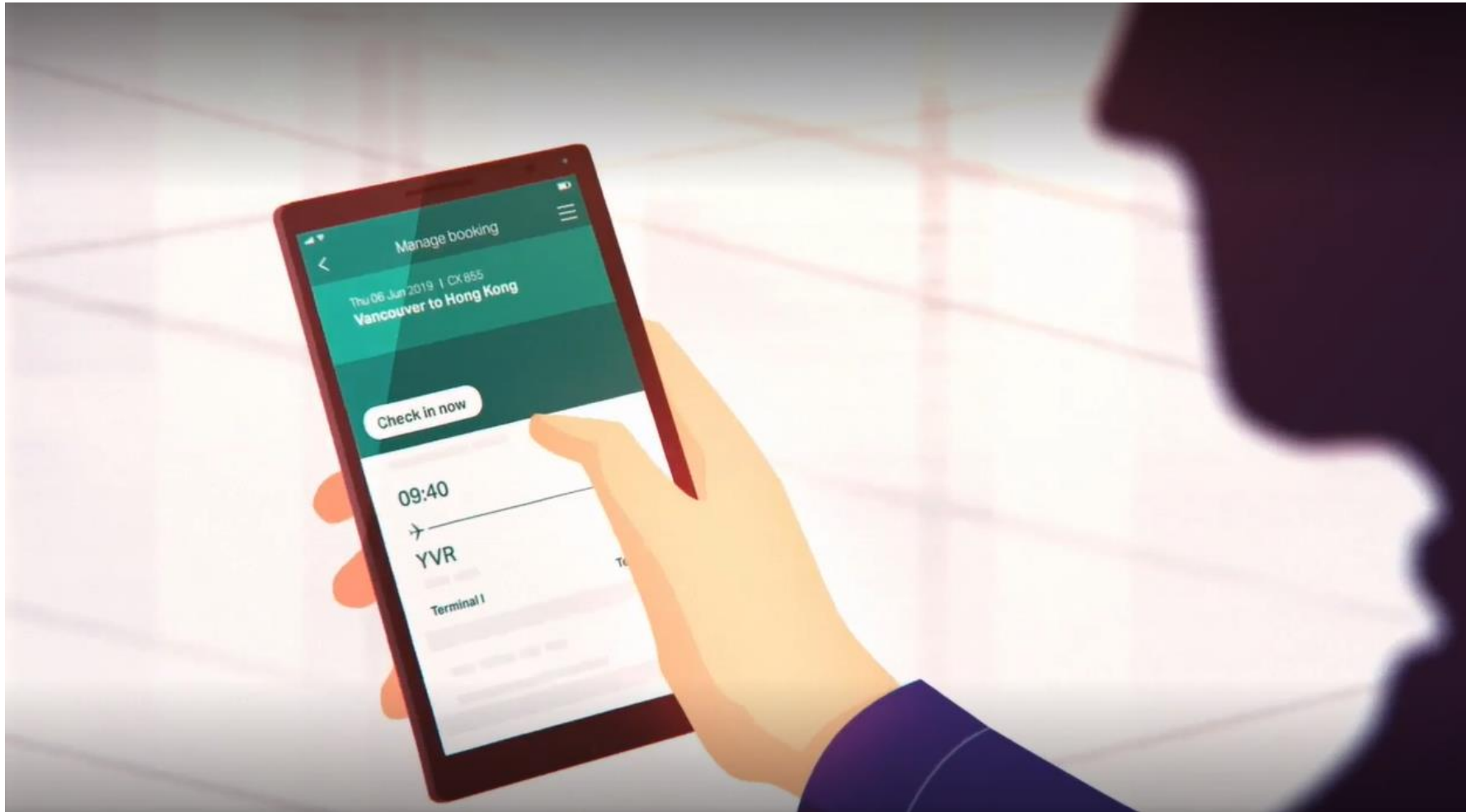


6 Board your return CX flight

Our codeshare with COTAI WaterJet (8C) makes travel to Macao even easier.

Operating **six sailings a day** between HKIA & Taipa Ferry Terminal, and **checked-through baggage**.

# Direct Air Pass (Air Plus Ferry) user journey to GBA



[Click here to watch video](#)

# Direct Air Pass (Air Plus Ferry) product features



## One-ticket

- Ticket includes both air segment and ferry segment
- T&C and baggage allowance align with Cathay Pacific
- The HKD120 HK Departure Tax will be exempted in the Direct Air Pass (Air Plus Ferry) fare
- Longer sales period compared to separate ferry and ticket, i.e. 360 days vs 6 months



## Seamless

- Controllable total journey time, connection time shortened to 120min
- Upstream check-in and luggage through-check at the ferry port
- No secondary security check required
- Provide disruption protection

Please note: Due to COVID-19, all ferry services for passengers from HKIA to Mainland China and Macao have been suspended until further notice. Shekou(ZYK) is the only ferry port to provide ferry service from Mainland China to HKIA for the time being.

# Direct flights to Guangzhou



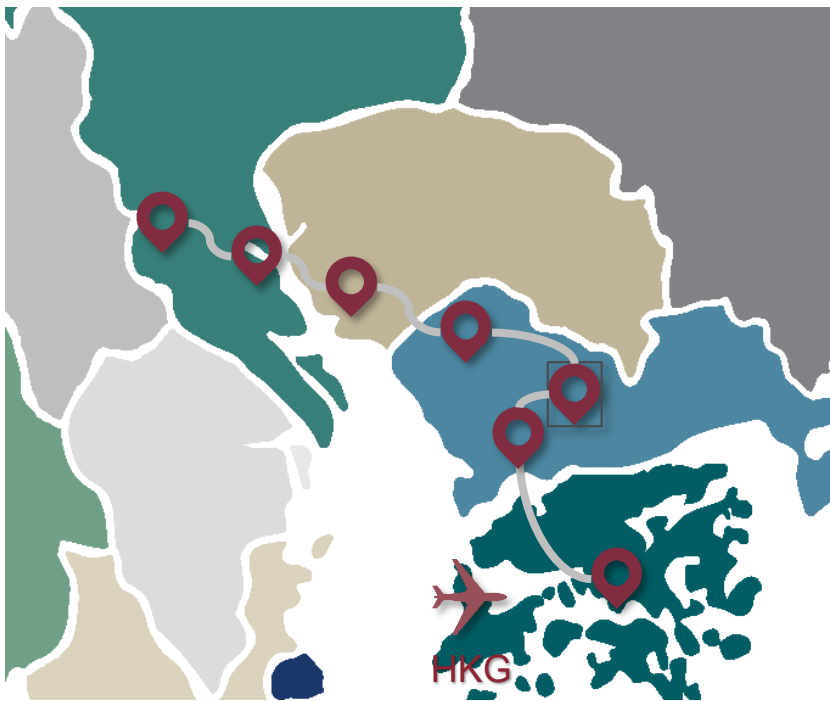
		Departure	Arrival
Hong Kong → Guangzhou	Daily	07:55	10:55
		20:15	21:10
Guangzhou → Hong Kong		10:10	11:25
		22:25	23:35

Please note: Transit to the Chinese Mainland via Hong Kong is temporarily suspended due to COVID-19. The schedule is subject to change. We encourage travellers to refer to our website for the most up-to-date flight schedule information.

# High Speed Rail



Direct long-haul trains running from West Kowloon, connecting Hong Kong with the Chinese Mainland's national high-speed rail network to a further 58 destinations without interchange.



Station	Fastest journey time
West Kowloon, Hong Kong	-
Futian, Shenzhen	14 minutes
Shenzhen North	23 minutes
Guangmingcheng, Shenzhen	31 minutes
Humen, Dongguan	44 minutes
Nansha Qingsheng, Guangzhou	50 minutes
Guangzhou South (Panyu)	48 minutes

Please note: High Speed Rail train service has been suspended and Hong Kong West Kowloon Station closed since 30 January 2020 until further notice.

# SkyLimo/ Mainland & Macao Coaches



Over 50 departure & pick-up points across the Chinese Mainland

SkyLimo: Door-to-door deluxe services between Hong Kong International Airport (HKIA) and Mainland China / Macao.

Coaches: Provide a convenient method of transportation between the Greater Bay Area and Hong Kong International Airport.

Please note: Due to COVID-19, all cross boundary land transport services for passengers from HKIA to Mainland China and Macao provided by service providers of HKIA, including SkyLimo, have been suspended until further notice.

# Intermodal passenger experience walkthrough (HKIA to GBA)



21

[Click here to watch video](#)

